

SITE DATA

ADDRESS 4114 ECHO FARMS BLVD., WILMINGTON, NC  
PARCEL ID R07006-002-001-00  
PROPOSED USE SINGLE-FAMILY RESIDENTIAL (DETACHED)  
EXISTING ZONING MF-M  
PARCEL AREA 26.75 AC (1,165,205 SF)  
CAMA LAND USE URBAN/ CONSERVATION AREA

PARKING LOT INTERIOR CANOPY COVERAGE

3,206 SF(20%) REQUIRED 641 SF PROPOSED 2,826 SF

PRESERVED TREES ONSITE

QUANTITY	SIZE	COMMON NAME	CREDITS
1	14"	GUM	3
1	18"	HICKORY	4
2	8"	OAK	4
1	30"	OAK	5
1	32"	OAK	5
1	12"	PINE	3
2	16"	PINE	6
6	18"	PINE	24
3	20"	PINE	12
6	22"	PINE	24
2	24"	PINE	8
1	10"	WALNUT	2

TOTAL CREDITS FOR PRESERVED TREES : 100 CREDITS

OVERALL TREE REQUIREMENTS (15 TREES/DISTURBED ACRE)

REQUIRED: 21.06 ACRES DISTURBED x 15 TREES = 316 TREES REQUIRED  
PROVIDED: 100 TREE CREDITS (EXISTING RETAINED TREES)  
216 TREES PROPOSED - REFER TO PLANTING LEGEND  
TOTAL: 316 TREES PROVIDED

GENERAL PLANTING NOTES

1. THIS WORK INCLUDES, BUT IS NOT LIMITED TO THE FURNISHING OF ALL LABOR, MATERIALS, EQUIPMENT, FINAL GRADING, SEEDING, SOIL AMENDMENTS, ETC., AS MAY BE REQUIRED FOR A COMPLETE INSTALLATION.
2. QUANTITIES SHOWN IN PLANT LISTS ARE FOR CONVENIENCE ONLY. PLANS SHALL GOVERN.
3. THE LANDSCAPE CONTRACTOR SHALL NOTIFY THE LANDSCAPE ARCHITECT OF ANY DISCREPANCIES IN PLANT LOCATIONS OR INSUFFICIENT PLANT QUANTITIES DUE TO DIFFERENCES IN PLAN AND ACTUAL FIELD CONDITIONS.
4. ALL TREE AND SHRUB MATERIAL SPECIFIED MUST MEET STANDARD INDUSTRY SPECIFICATIONS FOR THE CONTAINER SIZE INDICATED. DOWNSIZING OR SUBSTITUTION OF PLANT MATERIAL WITHOUT PRIOR APPROVAL OF LANDSCAPE ARCHITECT WILL NOT BE ALLOWED.
5. ALL LANDSCAPE AREAS SHALL BE GRADED TO A SMOOTH EVEN SURFACE PRIOR TO ANY PLANT INSTALLATION. ALL PLANT MATERIALS SHALL BE INSTALLED USING GOOD HORTICULTURAL PRACTICES IN ACCORDANCE WITH THE PLANS AND DETAILS.
6. TREES SHALL NOT BE PLANTED CLOSER THAN FOUR (4) FEET FROM ANY WALKWAY OR PUBLIC SIDEWALK EXCEPT WHERE TREE WELLS OR PARKWAYS ARE PROVIDED IN THE SIDEWALK AREA. ALL TREE PLANTED WITHIN FIVE (5) FEET OF WALKS OR PUBLIC UTILITIES SHALL RECEIVE DEEP ROOT BARRIERS.
7. TREE LOCATIONS SHOWN ON PLAN MAY REQUIRE ADJUSTMENT IN THE FIELD, WHENEVER FEASIBLE. TREES SHOULD BE PLANTED A MINIMUM OF TEN (10) FEET FROM ALL UNDERGROUND UTILITIES, STREETLIGHTS, HYDRANTS, AND OUT OF DRAINAGE FLOW LINES. SHOULD THIS NOT BE POSSIBLE, CONTACT THE LANDSCAPE ARCHITECT FOR DECISION ON PLACEMENT.
8. ALL TREES IN TURF AREAS SHALL HAVE 12" MIN. C.I.R. CIRCUMFERENCE AROUND THE TRUNK BASE. PROVIDE 2" MIN. THK. MULCH AT BASE OF TRUNK.
9. MATURE PLANTINGS SHALL NOT INTERFERE WITH UTILITIES AND TRAFFIC SIGHT LINES.
11. ALL AREAS PLANTED WITH GROUNDCOVER SHALL BE MULCHED WITH SHREDDED HARDWOOD MULCH. PROVIDED MIN. OF 3 INCHES OF MULCH AROUND ALL VEGETATION NEAR RETENTION PONDS. ALL REMAINING AREAS SHALL BE MULCHED WITH PINESTRAW.
12. PRIOR TO ANY CLEARING, GRADING, OR CONSTRUCTION ACTIVITY, TREE PROTECTION FENCING WILL BE INSTALLED AROUND PROTECTED TREES OR GROVES OF TREES. NO CONSTRUCTION WORKERS, TOOLS, MATERIALS OR VEHICLES ARE PERMITTED WITHIN THE TREE PROTECTION FENCING.
13. ANY RESURFACING / CONSTRUCTION OF PEDESTRIAN TRAILS BEYOND THE PARKING LOT WILL BE LIMITED TO HAND EQUIPMENT AND MINIMAL DISTURBANCE PERMITTED DUE TO THE SENSITIVITY OF THE RESOURCE. CONSTRUCTION RELEASE WILL CONTAIN CONDITION REGARDING THIS IMPROVEMENT

SYMBOL LEGEND

	LIMIT OF DISTURBANCE
	WETLAND AREA
	WETLAND BUFFER
	PROPOSED PEDESTRIAN PATH
	EXISTING TREES TO BE REMOVED
	EXISTING TREE TO REMAIN WITH TREE PROTECTION FENCING
	PROPOSED TREES COUNTING TOWARDS PARKING LOT COVERAGE CALCULATIONS
	STREET LIGHT, TYP



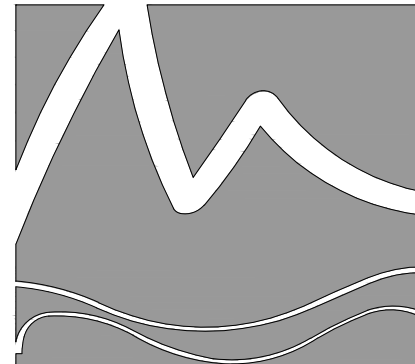
0 100 200 300 feet  
SCALE: 1" = 100'

Approved Construction Plan

Name	Date
Planning	
Traffic	
Fire	

PLANT SCHEDULE OVERALL

TREES	BOTANICAL NAME / COMMON NAME	CONT	CAL	RANGE	QTY
	Betula nigra / River Birch 'Duraheat'	B & B	2.5" CAL	8-10' HT	23
	Cercis c. 'Forest Pansy' TM / Forest Pansy Redbud	25 GAL	2" CAL	6-8' HT	6
	Pinus taeda / Loblolly Pine	B & B	2"-2.5" CAL	7-8' HT	70
	Quercus nuttallii / Nuttall Oak	B & B	2.5-3" CAL	10-12' HT	33
	Quercus virginiana / Southern Live Oak	B & B	2.5-3" CAL	10-12' HT	10
	Salix babylonica / Weeping Willow	B & B	2.5-3" CAL	10-12' HT	5
	Ulmus p. 'Ermer II' / Allee Elm	B&B	2.5-3" CAL	10-12' HT	30
	Zelkova serrata / Sawleaf Zelkova	B & B	2.5-3" CAL	10-12' HT	39
SHRUBS	BOTANICAL NAME / COMMON NAME	SIZE	RANGE		QTY
	Azalea l. 'Formosa' / Formosa Azalea	3 gal	18-24" HT		65
	Ilex vomitoria / Yaupon Holly	15 gal	4-5' HT		36
	Ilex vomitoria 'Nana' / Dwarf Yaupon	3 gal	15-18" HT		39
	Muhlenbergia capillaris / Pink Muhly	3 gal	18-24" HT		174
	Myrica cerifera / Wax Myrtle	15 gal	5-6' HT		48



MIHALY  
LAND DESIGN  
PLANNING + LANDSCAPE ARCHITECTURE  
330 MILITARY CUTOFF RD., Suite A3  
Wilmington, NC 28405 910.392.4355



Revisions

CLIENT  
ECHO FARMS, LLC  
c/o MATRIX DEVELOPMENT GROUP  
CN 4000 FORSGATE DRIVE  
CRANBURY, NJ 08512

PROJECT  
TRACT 2 - WOODLANDS @ ECHO FARMS  
4114 ECHO FARMS BLVD.  
WILMINGTON, NC 28412  
LANDSCAPE PLAN

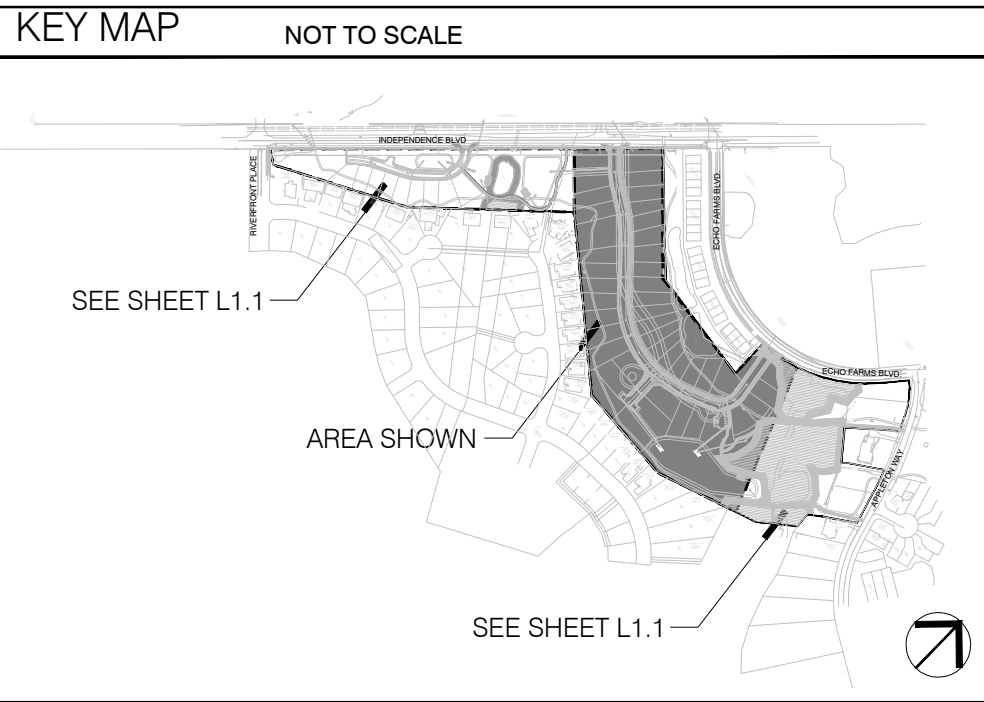
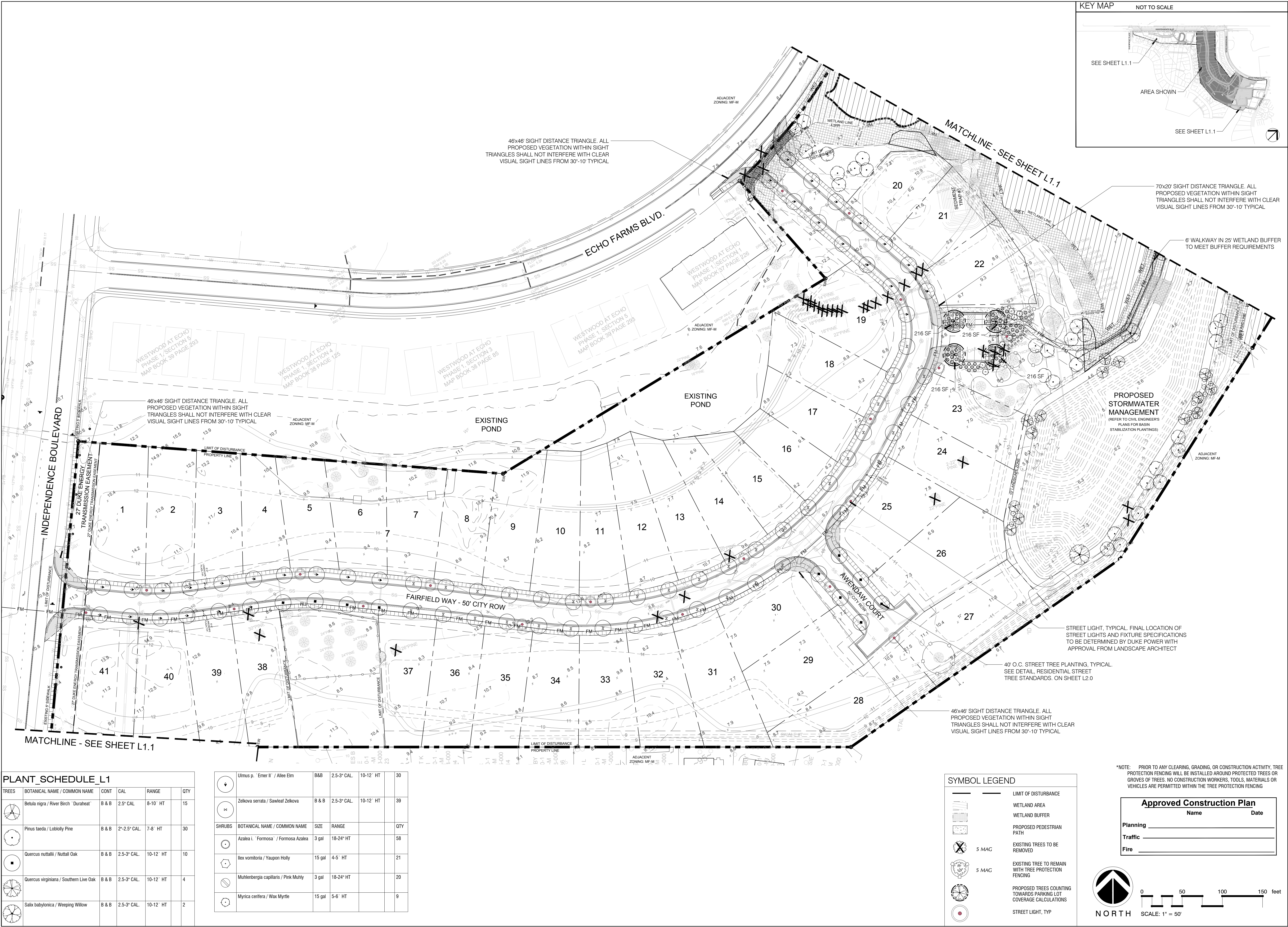
CONSTRUCTION DOCUMENT  
REVISION SHEET

Date: 1/26/2018  
Phase:  
Job Number: 810-01

Designed by: MLD  
Drawn by: MAS  
Checked by: JWM

Sheet Title:  
OVERALL PLAN

Sheet Number:  
L0.0  
of 4 sheets



MIHALY  
LAND DESIGN  
PLANNING + LANDSCAPE ARCHITECTURE  
339 MILITARY CUTOFF RD., Suite A3  
Wilmington, NC 28405 910.392.4355

JOSHUA W. MIHAL

Revisions

CLIENT

PROJECT

TRACT 2 - WOODLANDS @ ECHO FARMS  
4114 ECHO FARMS BLVD.  
WILMINGTON, NC 28412  
LANDSCAPE PLAN

CLIENT ECHO FARMS, LLC  
c/o MATRIX DEVELOPMENT GROUP  
CN 4000 FORSGATE DRIVE  
CRANBURY, NJ 08512

PLANT_SCHEDULE_L1					
TREES	BOTANICAL NAME / COMMON NAME	CONT	CAL	RANGE	QTY
	Betula nigra / River Birch "Duraheat"	B & B	2.5" CAL	8-10' HT	15
	Pinus taeda / Loblolly Pine	B & B	2"-2.5" CAL	7-8' HT	30
	Quercus nuttallii / Nuttall Oak	B & B	2.5-3" CAL	10-12' HT	10
	Quercus virginiana / Southern Live Oak	B & B	2.5-3" CAL	10-12' HT	4
	Salix babylonica / Weeping Willow	B & B	2.5-3" CAL	10-12' HT	2

	Ulmus p. 'Emer II' / Allee Elm	B&B	2.5-3" CAL	10-12' HT	30
	Zelkova serrata / Sawleaf Zelkova	B & B	2.5-3" CAL	10-12' HT	39
SHRUBS					
BOTANICAL NAME / COMMON NAME	SIZE	RANGE			QTY
Azalea l. 'Formosa' / Formosa Azalea	3 gal	18-24" HT			58
Ilex vomitoria / Yaupon Holly	15 gal	4-5' HT			21
Muhlenbergia capillaris / Pink Muhly	3 gal	18-24" HT			20
Myrica cerifera / Wax Myrtle	15 gal	5-6' HT			9

SYMBOL LEGEND

LIMIT OF DISTURBANCE

WETLAND AREA

WETLAND BUFFER

PROPOSED PEDESTRIAN PATH

5" MAG  
EXISTING TREES TO BE REMOVED

5" MAG  
EXISTING TREE TO REMAIN WITH TREE PROTECTION FENCING

PROPOSED TREES COUNTING TOWARDS PARKING LOT COVERAGE CALCULATIONS

STREET LIGHT, TYP

\*NOTE: PRIOR TO ANY CLEARING, GRADING, OR CONSTRUCTION ACTIVITY, TREE PROTECTION FENCING WILL BE INSTALLED AROUND PROTECTED TREES OR GROVES OF TREES. NO CONSTRUCTION WORKERS, TOOLS, MATERIALS OR VEHICLES ARE PERMITTED WITHIN THE TREE PROTECTION FENCING

Approved Construction Plan

Name	Date
Planning	
Traffic	
Fire	

0 50 100 150 feet

NORTH

SCALE: 1" = 50'

Date: 1/26/2018

Phase:

Job Number: 810-01

Designed by: MLD

Drawn by: MAS

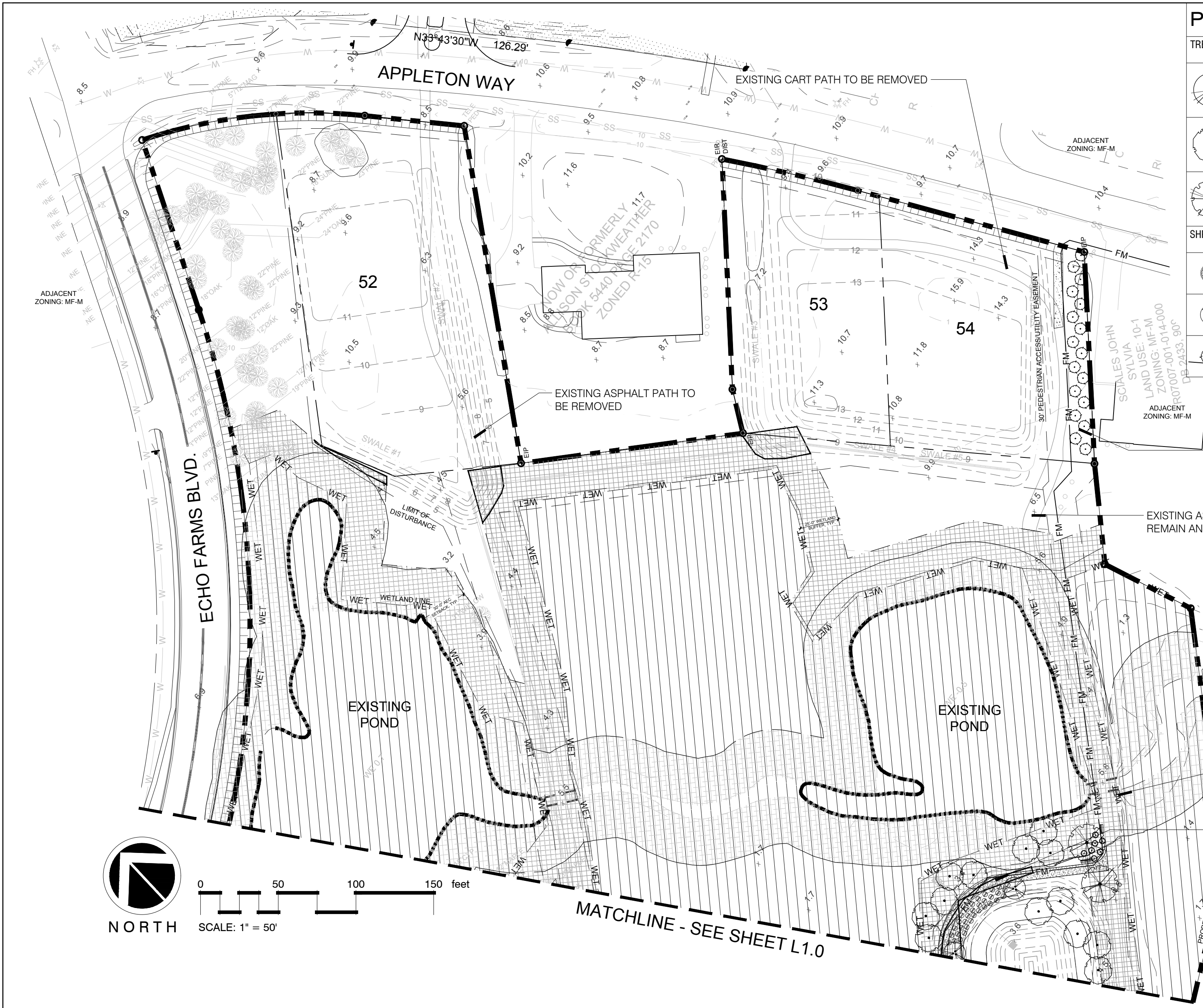
Checked by: JWM

Sheet Title: LANDSCAPE PLAN



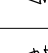

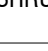
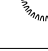
Sheet Number:

L1.0

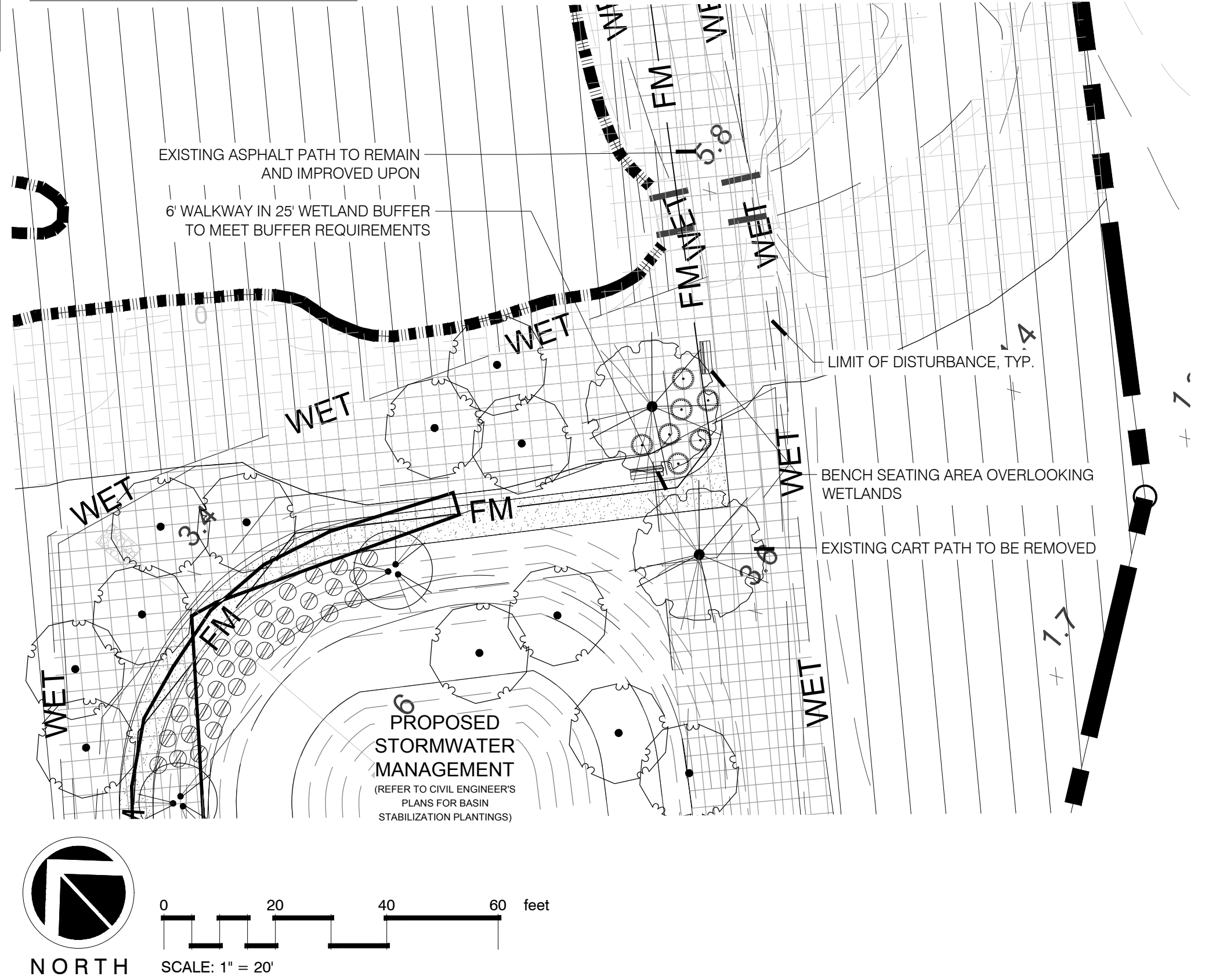
of 4 sheets



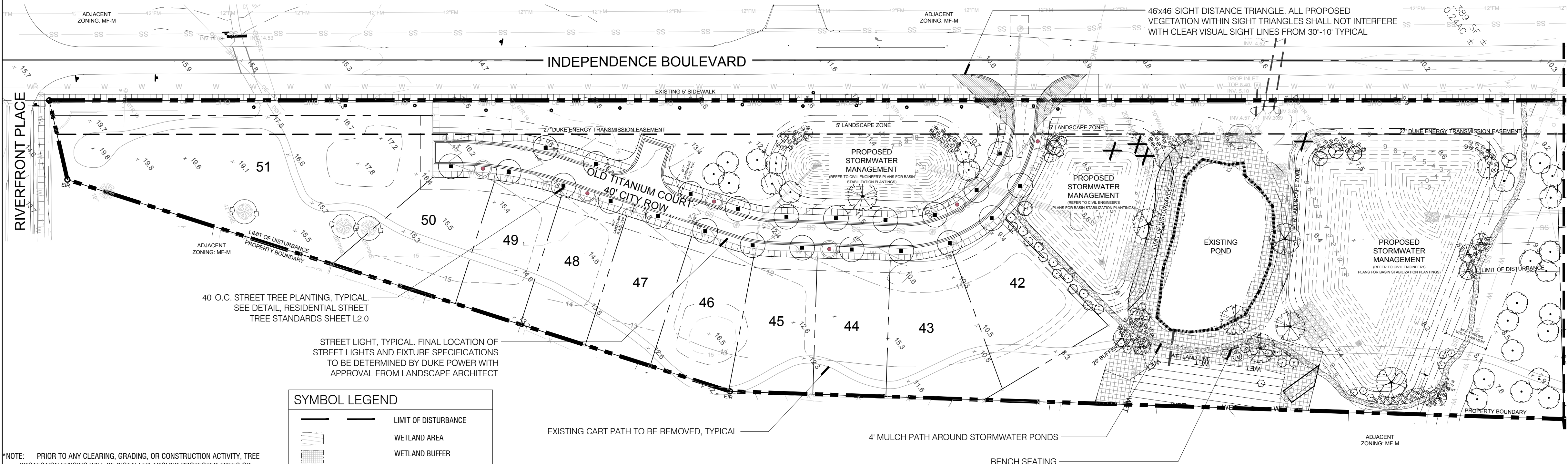
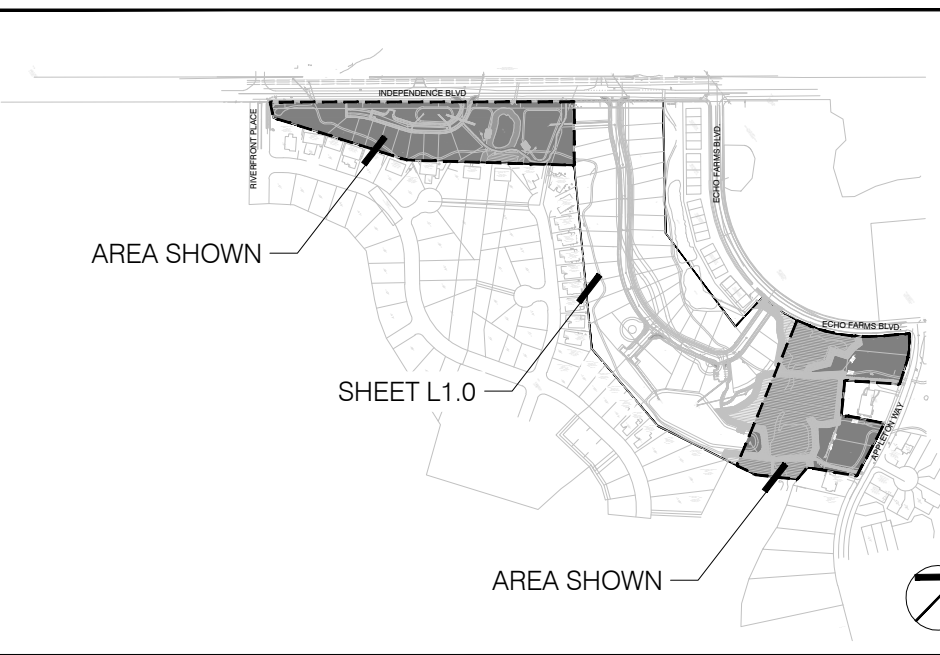
PLANT SCHEDULE APPLETON WAY

TREES	BOTANICAL NAME / COMMON NAME	CONT	CAL	RANGE	QTY
	Betula nigra / River Birch 'Duraheat'	B & B	2.5" CAL	8-10' HT	1
	Pinus taeda / Loblolly Pine	B & B	2"-2.5" CAL.	7-8' HT	13
	Quercus virginiana / Southern Live Oak	B & B	2.5-3" CAL.	10-12' HT	2
SHRUBS	BOTANICAL NAME / COMMON NAME	SIZE	RANGE	QTY	
	Azalea i. 'Formosa' / Formosa Azalea	3 gal	18-24" HT	7	
	Muhlenbergia capillaris / Pink Muhly	3 gal	18-24" HT	33	
	Myrica cerifera / Wax Myrtle	15 gal	5-6' HT	17	

KAYAK LAUNCH ENLARGEMENT



KEY MAP NOT TO SCALE



PLANT SCHEDULE INDEPENDENCE BLVD.

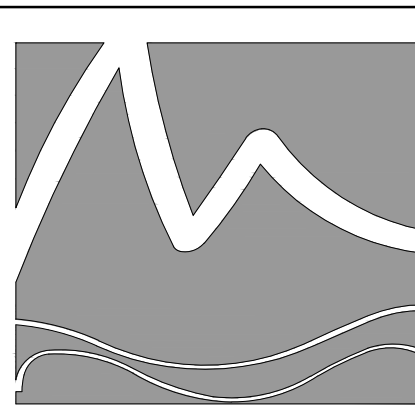
TREES	BOTANICAL NAME / COMMON NAME	CONT	CAL	RANGE	QTY
	Betula nigra / River Birch "Duraheat"	B & B	2.5" CAL	8-10' HT	7
	Cercis c. "Forest Pansy" TM / Forest Pansy Redbud	25 GAL	2" CAL	6-8' HT	6
	Pinus taeda / Loblolly Pine	B & B	2"-2.5" CAL.	7-8' HT	27
	Quercus nuttallii / Nuttall Oak	B & B	2.5-3" CAL.	10-12' HT	23
	Quercus virginiana / Southern Live Oak	B & B	2.5-3" CAL.	10-12' HT	4
	Salix babylonica / Weeping Willow	B & B	2.5-3" CAL.	10-12' HT	3
SHRUBS	BOTANICAL NAME / COMMON NAME	SIZE	RANGE	QTY	
	Ilex vomitoria / Yaupon Holly	15 gal	4-5' HT	15	
	Ilex vomitoria "Nana" / Dwarf Yaupon	3 gal	15-18" HT	39	
	Muhlenbergia capillaris / Pink Muhly	3 gal	18-24" HT	121	
	Myrica cerifera / Wax Myrtle	15 gal	5-6' HT	22	

\*NOTE: PRIOR TO ANY CLEARING, GRADING, OR CONSTRUCTION ACTIVITY, TREE PROTECTION FENCING WILL BE INSTALLED AROUND PROTECTED TREES OR GROVES OF TREES. NO CONSTRUCTION WORKERS, TOOLS, MATERIALS OR VEHICLES ARE PERMITTED WITHIN THE TREE PROTECTION FENCING

**Approved Construction Plan**

Name	Date
Planning	
Traffic	
Fire	

SYMBOL LEGEND	
	LIMIT OF DISTURBANCE
	WETLAND AREA
	WETLAND BUFFER
	PROPOSED PEDESTRIAN PATH
	EXISTING TREES TO BE REMOVED
	EXISTING TREE TO REMAIN WITH TREE PROTECTION FENCING
	STREET LIGHT, TYP



**MIHALY**  
LAND DESIGN  
PLANNING + LANDSCAPE ARCHITECTURE  
330 MILITARY CUTOFF RD., Suite A3  
Wilmington, NC 28405 910.392.4355



**Revisions**  
2018-07-12: Updated Engineers base per emailed CAD file.

**CLIENT**  
**ECHO FARMS, LLC**  
c/o MATRIX DEVELOPMENT GROUP  
CN 4000 FORSGATE DRIVE  
CRANBURY, NJ 08512

**PROJECT**  
**TRACT 2 - WOODLANDS @ ECHO FARMS**  
4114 ECHO FARMS BLVD.  
WILMINGTON, NC 28412  
LANDSCAPE PLAN

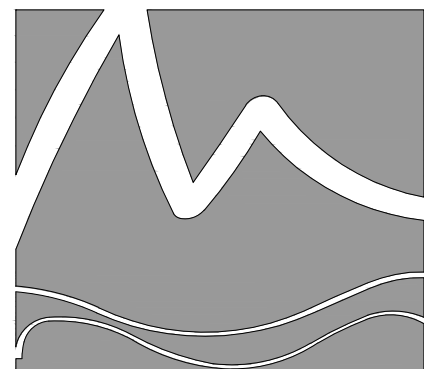
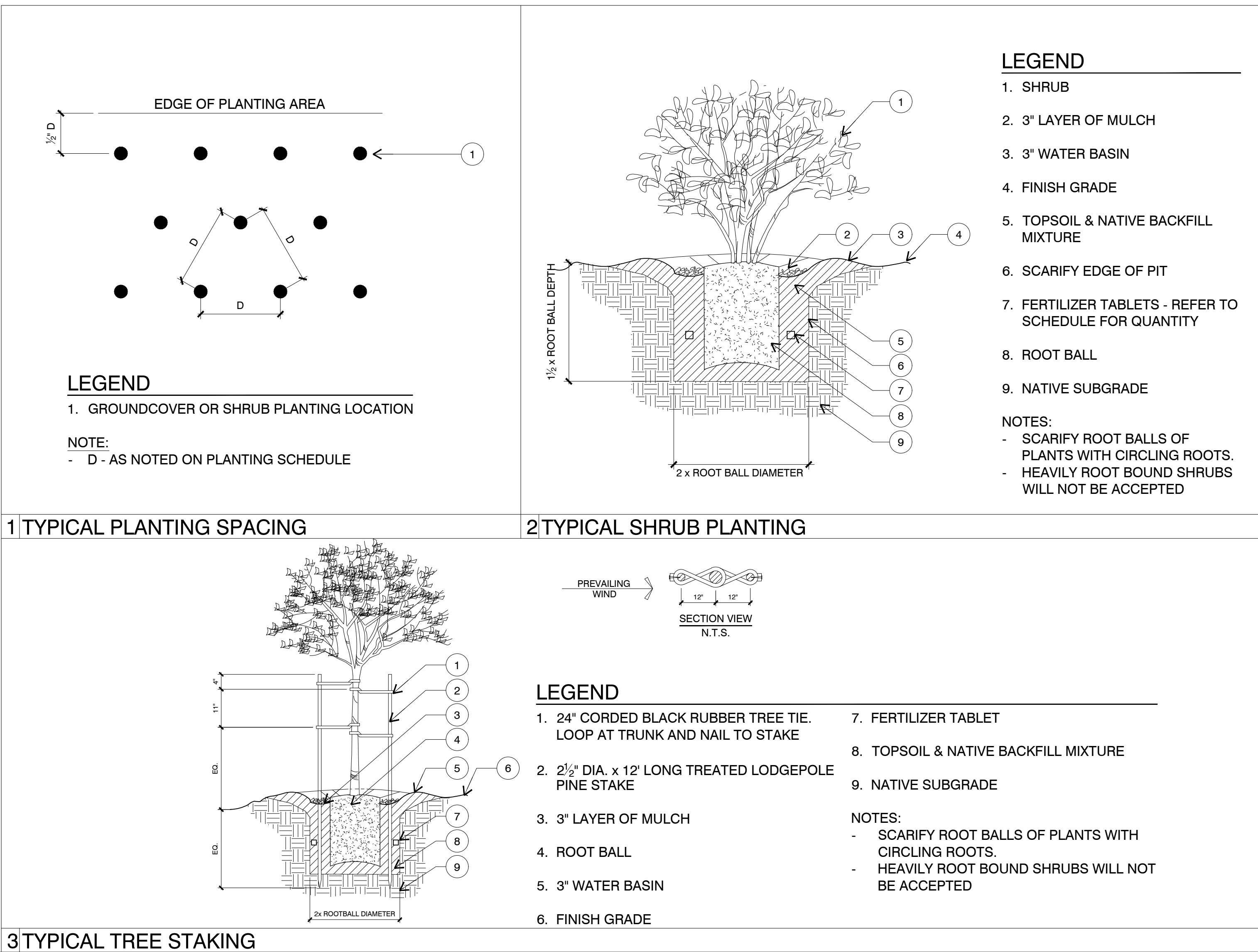
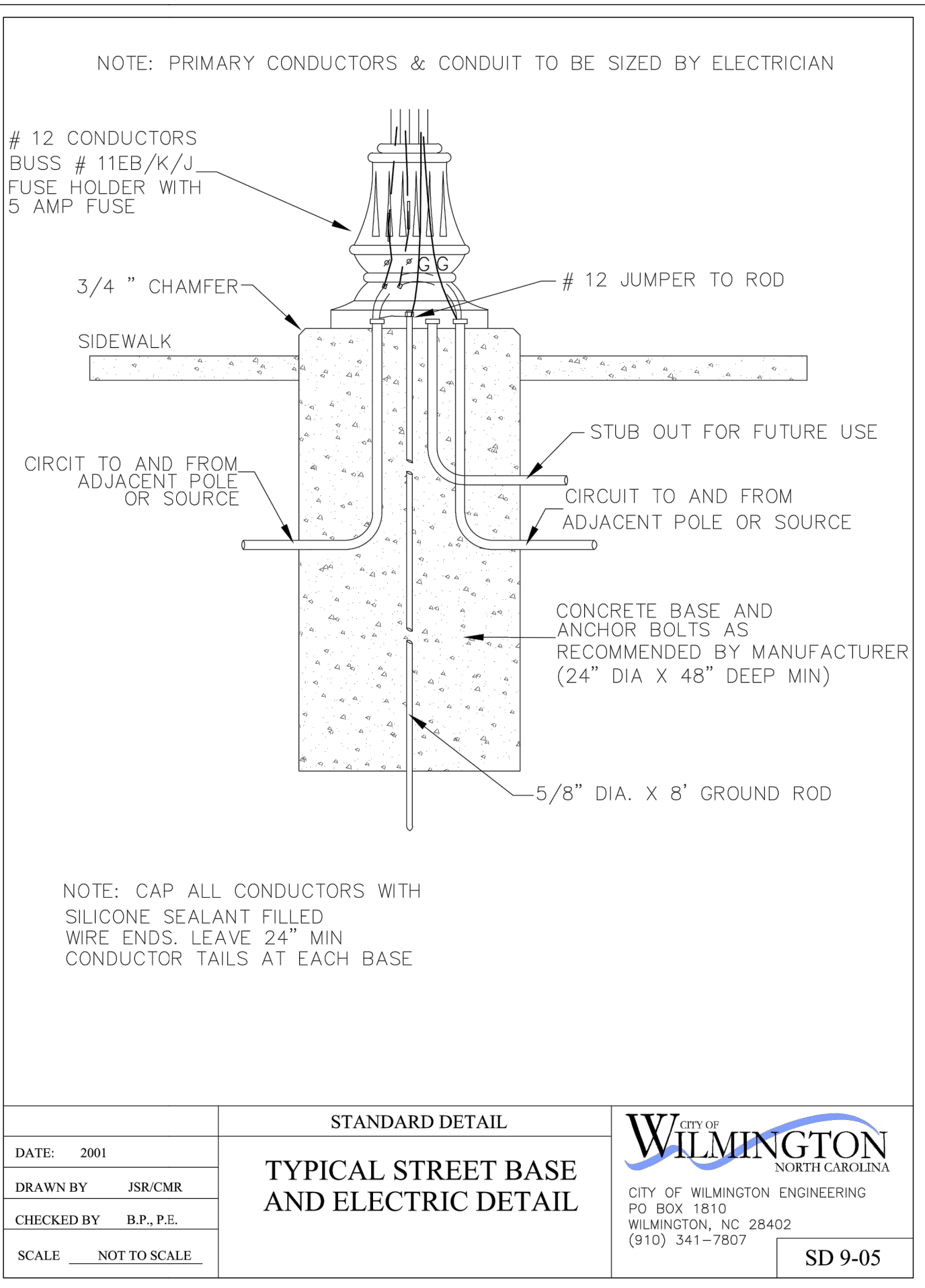
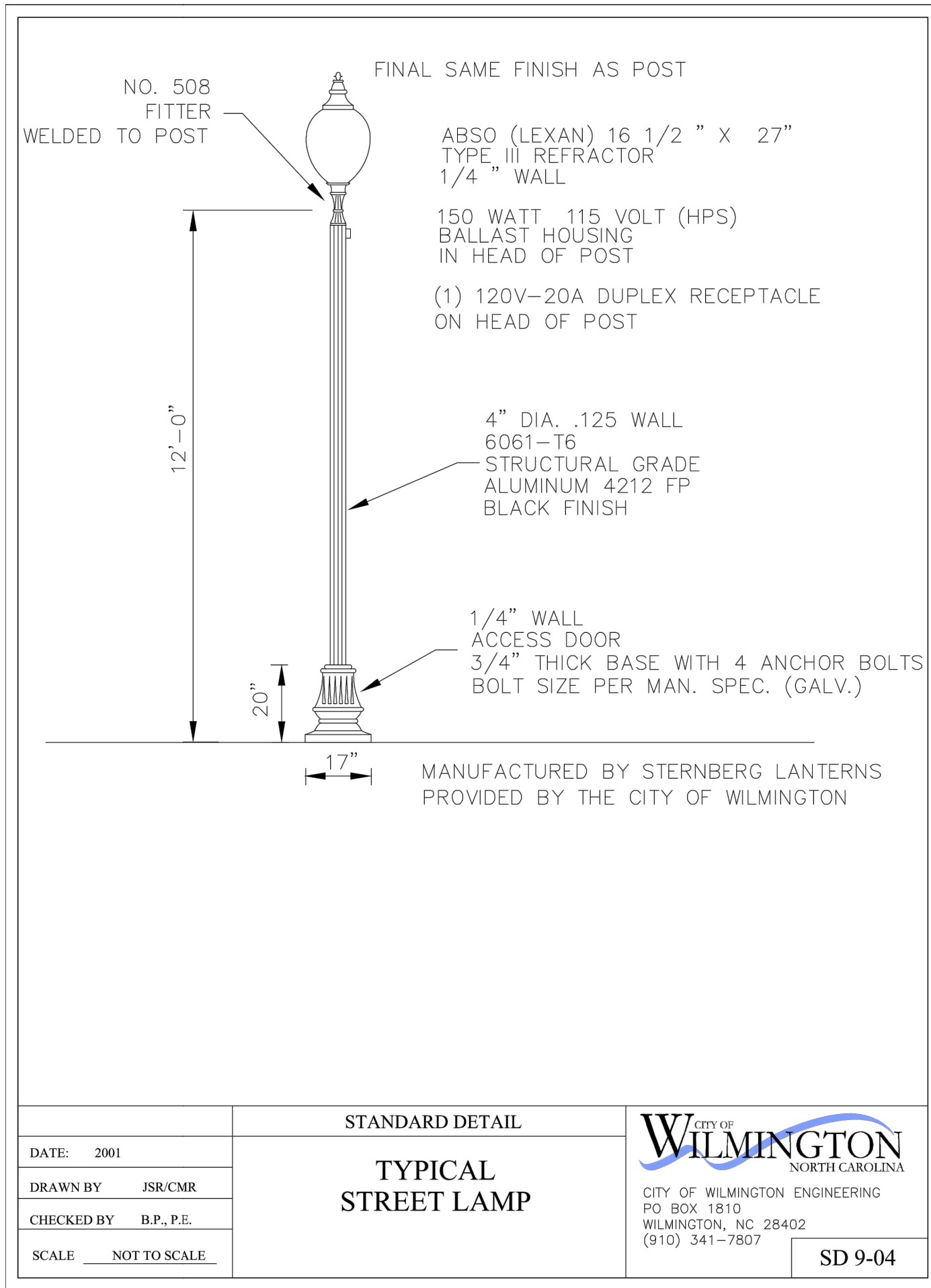
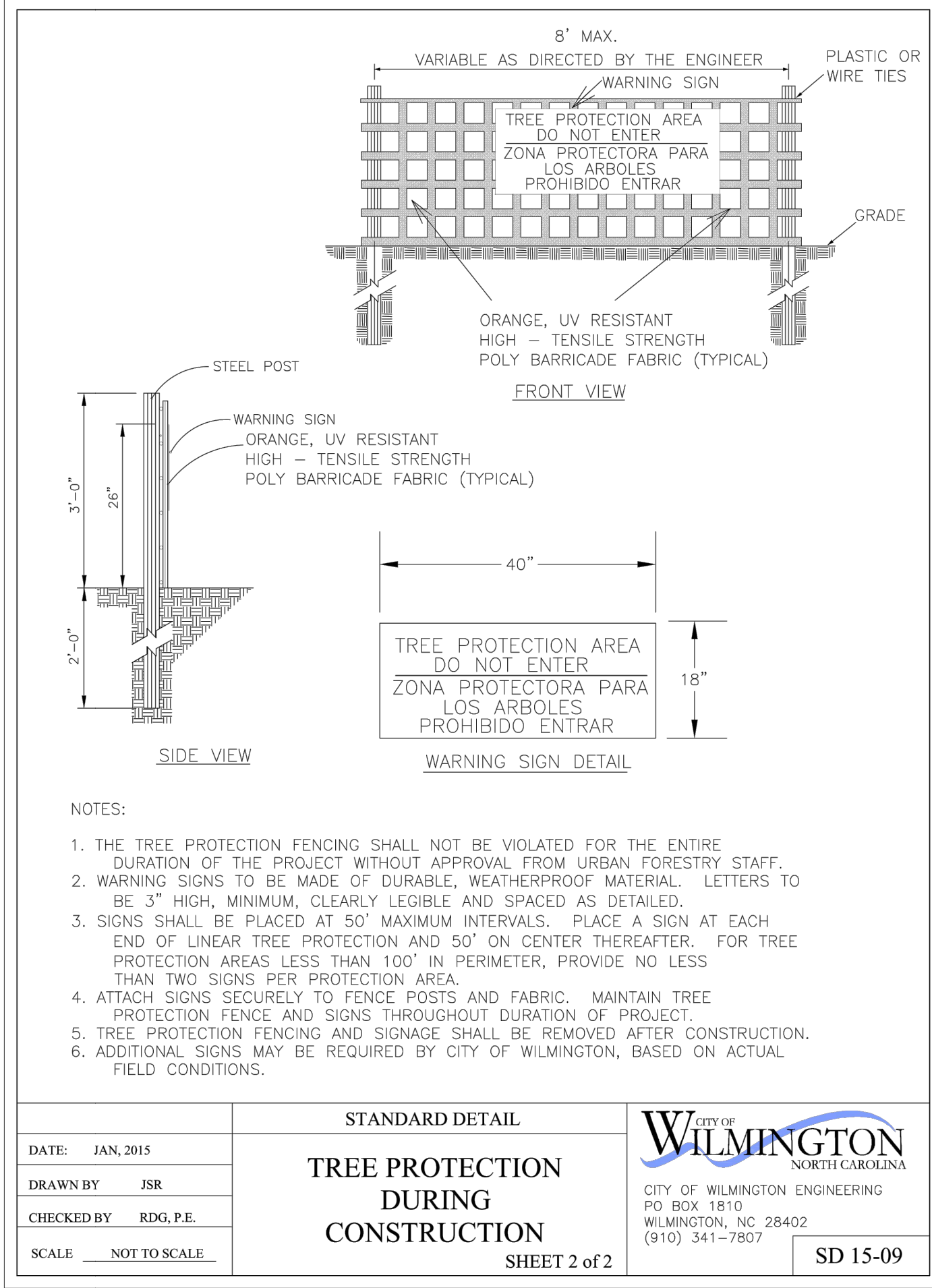
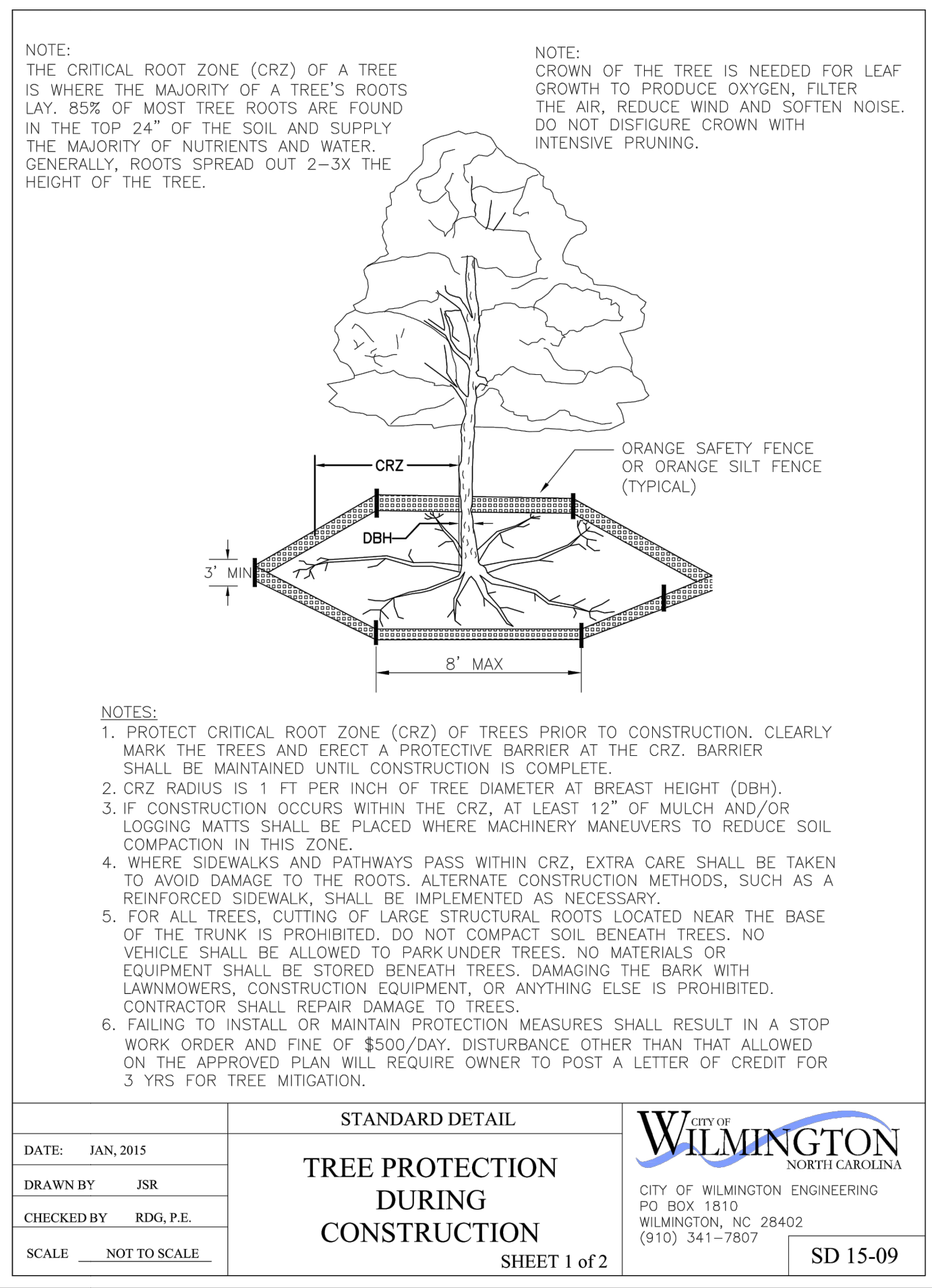
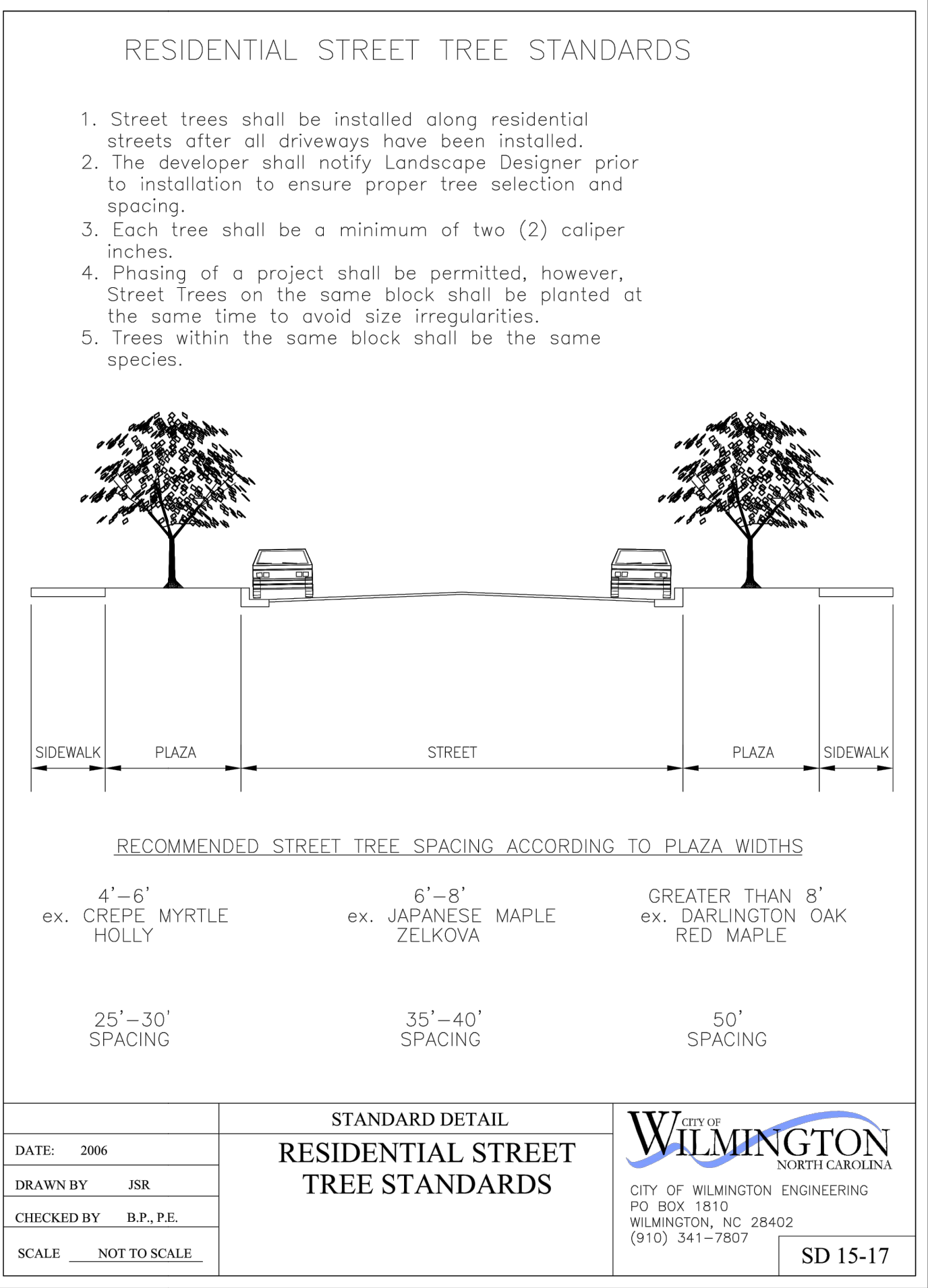
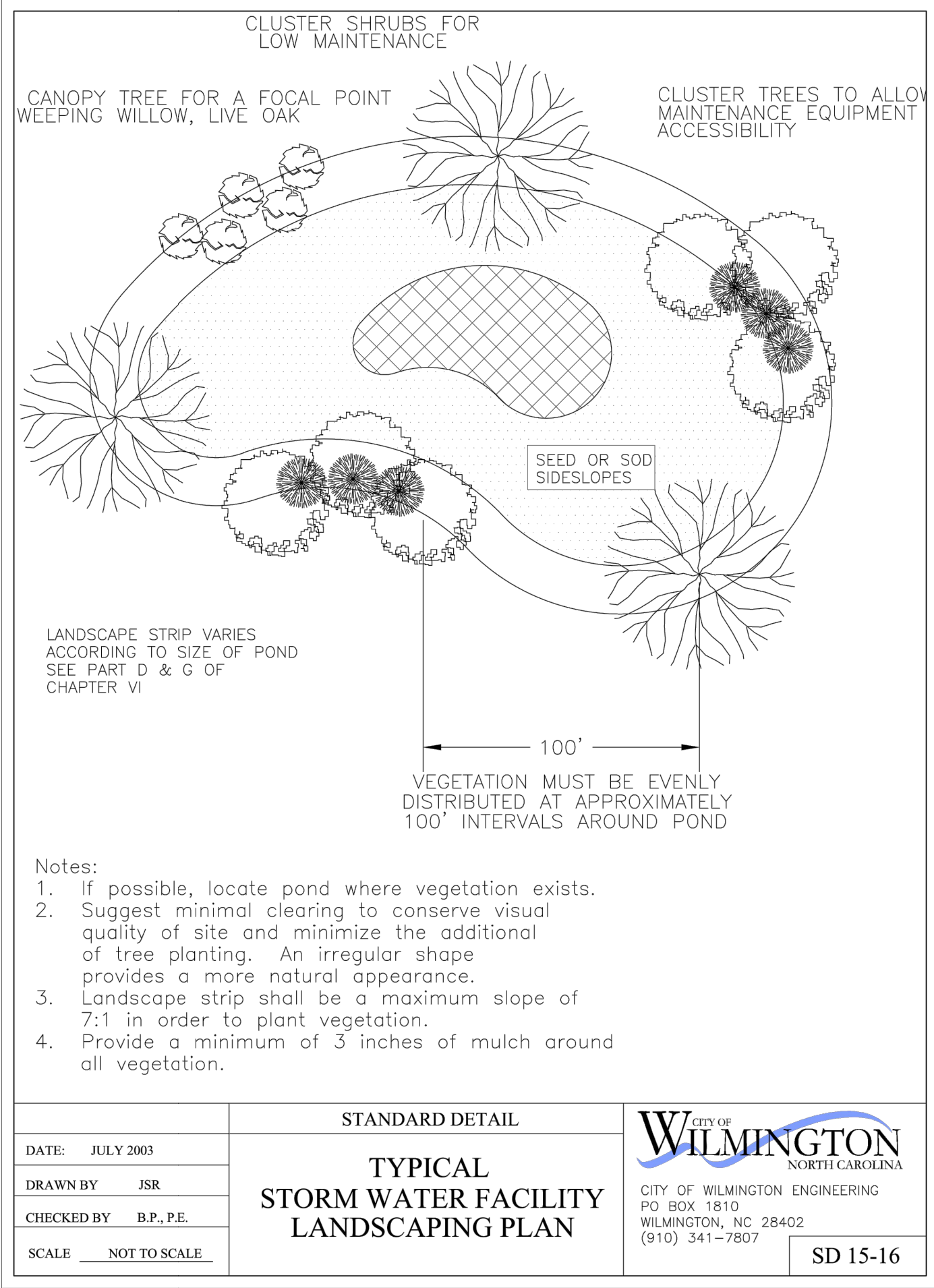
**CONSTRUCTION DOCUMENT REVIEW SHEET**

Date: 1/26/2018  
Phase:  
Job Number: 810-01

Designed by: MLD  
Drawn by: MAS  
Checked by: JWM

Sheet Title:  
**LANDSCAPE PLAN**

Sheet Number:  
**L1.1**  
of 4 sheets



MIHALY  
LAND DESIGN  
PLANNING + LANDSCAPE ARCHITECTURE  
330 MILITARY CUTOFF RD., Suite A3  
Wilmington, NC 28405 910.392.4355



Revisions

CLIENT

ECHO FARMS, LLC  
c/o MATRIX DEVELOPMENT GROUP  
CN 4000 FORSGATE DRIVE  
CRANBURY, NJ 08512

PROJECT

TRACT 2 - WOODLANDS @ ECHO FARMS  
4114 ECHO FARMS BLVD.  
WILMINGTON, NC 28412  
LANDSCAPE PLAN

CONSTRUCTION  
DOCUMENT  
REVIEW SET

Date: 1/26/2018  
Phase:  
Job Number: 810-01  
Designed by: MLD  
Drawn by: MAS  
Checked by: JWM  
Sheet Title:  
DETAILS

Sheet Number:  
L2.0  
of 4 sheets